

OFFICE SPACE FOR LEASE
KELSEY CREEK CENTER
15015 MAIN STREET • BELLEVUE, WASHINGTON 98007



AVAILABLE

Excellent East-Side Value at \$20.00 PSF, Fully Serviced.

Full Commission to Outside Broker.

SUITE 208

Approximately 414 Square Feet.

One Private Office and Reception.

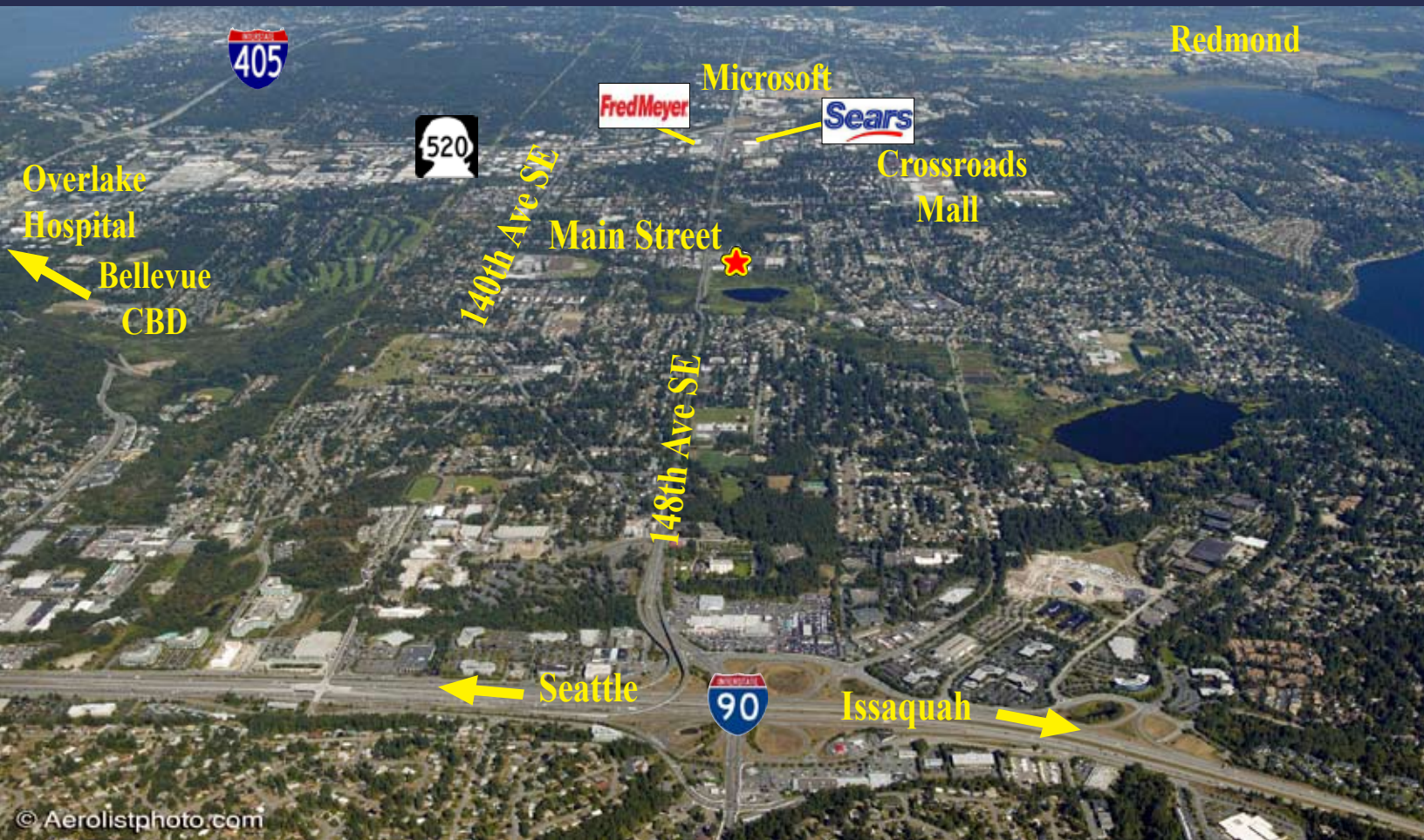
For Information Contact:

David Behar (206) 972-3983
dbehar@emeraldcommercial.com

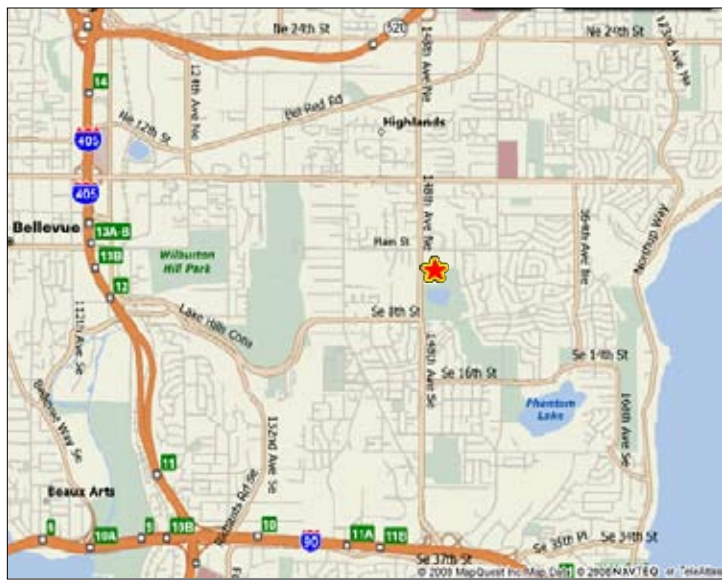
EMERALD COMMERCIAL
REAL ESTATE SERVICES

OFFICE SPACE FOR LEASE KELSEY CREEK CENTER

15015 MAIN STREET • BELLEVUE, WASHINGTON 98007



© Aerolistphoto.com



- Centrally located on 148th Avenue Northeast in Bellevue - Just Minutes from I-405, I-90 and SR 520.
- Convenient Access to 'Eastside' Business and Population Centers, as well as to Downtown Seattle.
- Located Adjacent to Residential Development and Greenbelt, yet Convenient to Restaurants, Shopping and Services.
- Interior Building Enhancements Recently Completed.
- High Speed Internet Capability.
- Air Conditioned Building.

For Information Contact:

David Behar (206) 972-3983
dbehar@emeraldcommercial.com

EMERALD COMMERCIAL
REAL ESTATE SERVICES