

RETAIL SPACE FOR LEASE

KELSEY CREEK CENTER

15015 MAIN STREET • BELLEVUE, WASHINGTON 98007



AVAILABLE

SUITE 103 - Approximately 1,450 Square Feet
SUITE 111A - Approximately 1,144 Square Feet

- Retail Space in the Heart of Bellevue.
- Vibrant Center at High Traffic Intersection.
- Center Includes Other Regional and National Retailers Including Starbucks, Subway and Watermark Credit Union.
- Centrally located at 148th Avenue Northeast and Main - Just minutes from I-405, I-90 and SR 520.
- Convenient Access to 'Eastside' Business and Population Centers.

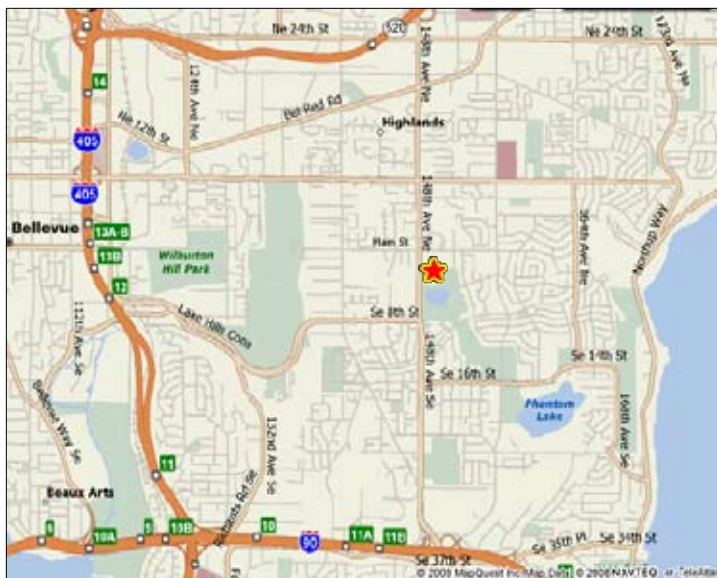
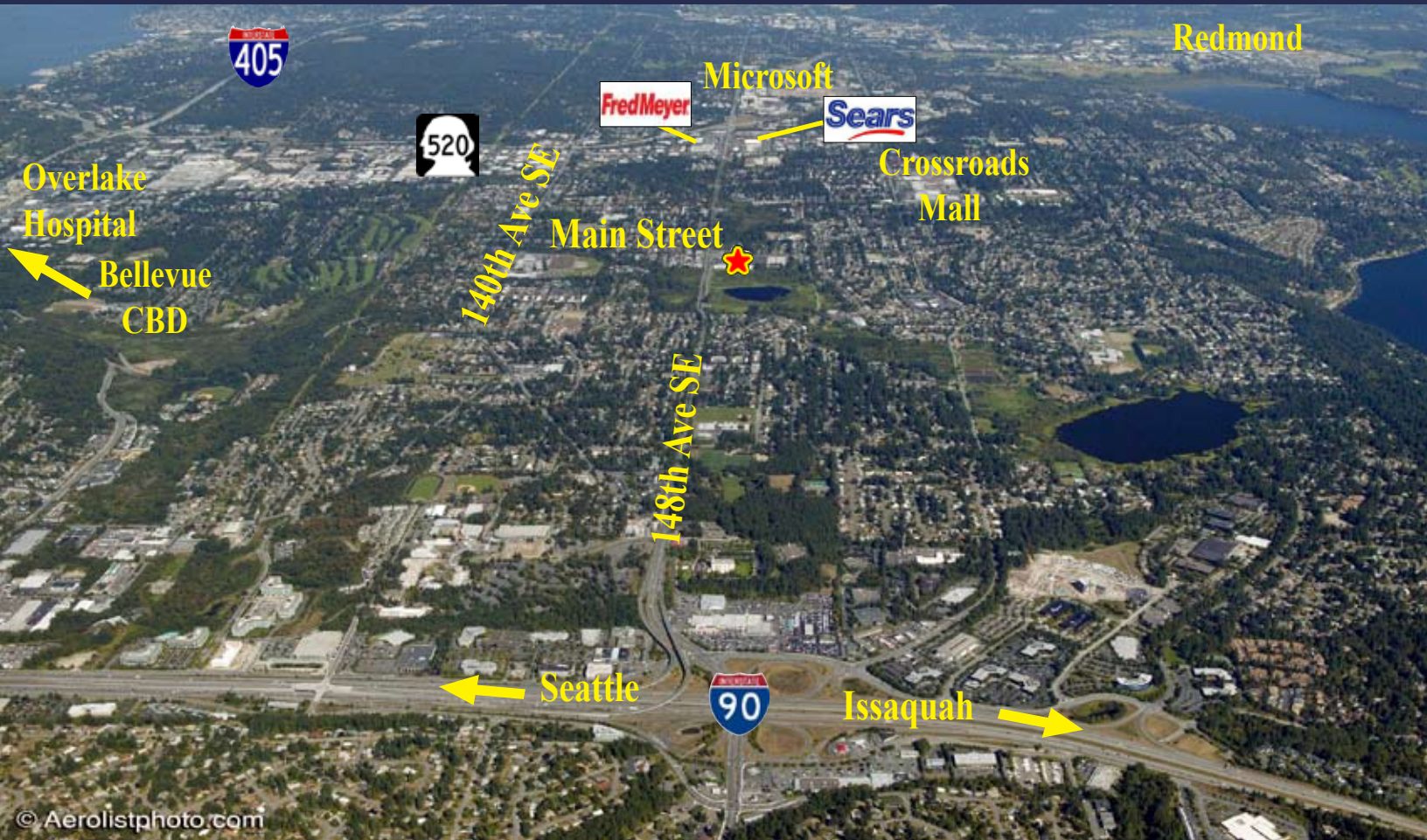
For Information Contact:

David Behar (206) 972-3983
dbehar@emeraldcommercial.com

EMERALD COMMERCIAL
REAL ESTATE SERVICES

RETAIL SPACE FOR LEASE KELSEY CREEK CENTER

15015 MAIN STREET • BELLEVUE, WASHINGTON 98007



Demographics

Population (US Census Bureau 2009 Estimates)

1 Mile	20,507
3 Mile	88,910
5 Mile	212,882

Average Household Income (Census 2009 Estimate)

1 Mile	\$85,563
3 Mile	\$104,329
5 Mile	\$122,909

Traffic Count (2007)

148th south of Main	34,100
---------------------------	--------

For Information Contact:

David Behar (206) 972-3983
dbehar@emeraldcommercial.com

EMERALD COMMERCIAL
 REAL ESTATE SERVICES